



T-PORTS⁺

TRANSHIP + COMMODITIES + GLOBAL

BRINGING THE PORT TO THE PRODUCT

Harvest Handbook 2025/2026
For Growers and Carriers
12.HBK.02
September 2025

1800 87 67 87
www.tports.com




Contents

GENERAL INFORMATION	3
ONLINE INDUCTION	3
GET STARTED GUIDE	4
WAREHOUSING AND ONLINE PORTAL	5
ON FARM STORAGE PROGRAM	6
CHECKLIST	7
CODE OF PRACTICE	8
CHAIN OF RESPONSIBILITY (COR)	8
HEALTH AND SAFETY	8
ROAD SAFETY	8
PEDESTRIANS	8
PASSENGERS	8
ALCOHOL AND DRUGS – ZERO TOLERANCE	9
PREVENTION OF DUST EXPLOSIONS	9
HAZARDOUS CONDITIONS	9
FUMIGATION	9
PERSONAL PROTECTIVE EQUIPMENT	9 - 10
HEAVY VEHICLE OPERATORS	ERROR! BOOKMARK NOT DEFINED.1
CHILDREN AND ANIMALS	ERROR! BOOKMARK NOT DEFINED.
INCIDENT REPORTING	11
TAILGATE POLICY	11
GRID PROTOCOLS	122
MASS MANAGEMENT / LOGISTICS	ERROR! BOOKMARK NOT DEFINED.
OVERLOADING POLICY / STRIKES	12
WORKING WITH OTHER GRAIN RECEIVERS	13
HYGIENE	13
CLASS 1 PRODUCTS	13
CLASS 2 PRODUCTS	144
CLASS 3 PRODUCTS	14
ACCREDITATION AND FATIGUE MANAGEMENT	14
HARVEST DELIVERY FORM (HDF)	15 - 16
TRAFFIC MANAGEMENT PLANS	177 - 23
T-PORTS CAREERS	244
KEY CONTACT INFORMATION	244

General Information

Segregations and opening hours are subject to change. Although changes are frequently communicated, please do not hesitate to contact your local site manager to check.

T-Ports Website	T-Ports Online Portal
www.tports.com/harvest	www.tports.com
T-Ports APP	Grower Support Ph.
<div> </div> <div> </div>	1800 87 67 87

Online Induction


The safety of all who enter our sites and the preservation of the quality of the grain products we handle is paramount to our sustained success. We need your cooperation to ensure our sites remain safe and your grain remains contaminant free.

It is a requirement of entry to T-Ports that all people over the age of 15 have completed an online induction. T-Ports staff may ask for confirmation of your induction at any time and you may be asked to complete before proceeding any further if found to be incomplete.

Please ensure you complete the induction carefully and understand all information given to you. If at any stage you have a question please contact your T-Ports representative for clarification.


Complete the online induction now

www.tports.com/harvest


T-PORTS

GET STARTED GUIDE

T-PORTS ONLINE SERVICES



Apple



Android

OR

WEB PORTAL

Download our T-Ports App!

Use the QR codes or app store to download the T-Ports App.

Visit our T-Ports website: tports.com

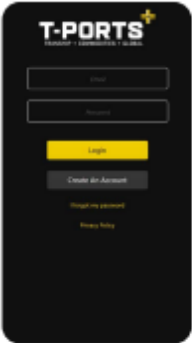
to access your online web portal.

To use T-Ports online services, you will need to **create an account**. Follow the simple steps to create an account and add your payee numbers. You will have access to all of your NGR numbers and easily switch between them to display one at a time.

1

Enter your details and create a password.


Make sure you have easy access to your emails so you can access your confirmation code to proceed.



2

Your new login details will work for both our portal and our app.


Create a PIN for fast and easy access! Your PIN can be up to 6 digits.



3


Add your payee numbers to your online account. Have your payee numbers and passwords ready so you can add them to your account.

Can't remember your password? Follow the steps to create or update your password for each payee number.




4

You can now assign a Broker to manage your T-Ports deliveries! Use the Manage Brokers feature to assign one or more of your payee numbers.



Have you downloaded your reports? Log into the portal to view your **EPR, Complete Transaction and NHVAS Reports**. (reports not available on the app).

HAVING TROUBLE?
Call 1800 87 67 87 and our support staff will be happy to help.

T-PORTS

Document Number: 12.HBK.02 | Version Number 05

Page 4 of 24

Warehousing and Online Portal

- ✦ Delivered grain stored within the T-Ports operating system Commodity Site Management (CSM) is recorded against the relevant grower NGR (*National Grower Registration Number*) within the T-Ports database. If you require an NGR please visit the following website and register your details: www.ngr.com.au
- ✦ Grain receivals data and transactions can be viewed online via the T-Ports portal. The first time you deliver to a site, your NGR card details will be entered into the computer system. From this, a login for the T-Ports online grower portal system will be created. You will receive an email prompting you to create a new password.
- ✦ T-Ports sites are highly automated, including automated sampling probes and weighbridges. In the event the systems are unavailable, loads may be assessed and graded using a manual receipt process. Grain receipt standards remain consistent regardless of whether grain is received manually or not. Manual loads are entered into the system once it is back online and, as a result, there is a delay before they will appear on your grower portal.

The T-Ports online grower portal will enable you to:

- ✦ View Warehoused Stock Information
- ✦ Create Warehouse Transfers to a registered buyer or to another NGR card (warehouse to warehouse transfer) view the status of all transfers
- ✦ View and download your EPR, transaction history and NHVAS reports
- ✦ Assign a broker to manage your grain
- ✦ View site operating hours

The grower portal is accessible via:

www.tports.com

For specific assistance with the online grower portal, please call the Grower Helpline: **1800 876 787**

IMPORTANT – Supply of Warehoused Data

Many growers choose to Warehouse their tonnes at the point of delivery and complete a Warehouse transfer at a later date. We understand there are various platforms for growers to market grain they have stored in Warehouse. At T-Ports, we aim to maximise your marketing opportunities and regularly supply data on warehoused tonnes to our registered grain buyers. We accept that not everyone would like their data supplied to our buyers. If this is you, please call our Support Line (1800 87 67 87) with your NGR number(s) to opt out of this service. You can find out more by visiting our warehousing Terms and Conditions available on our website.

On Farm Storage Program 2025/2026

At T-Ports, we understand the pressure of harvest logistics and are pleased to support growers with our On Farm Storage (OFS) Program for the 25/26 harvest.

The OFS Program is focused on providing growers with the incentive to use or build OFS infrastructure to capture better control of their product and revenue and reduce the pressures of delivery during harvest. Growers can forward contract to grain traders or warehouse upon delivery to sell at a later date.

- ✦ Register your interest and discuss your rebate by 15th NOV with Hayley Lewis – 0418 838 872
- ✦ Provide estimated grade and tonnes (best guess) by 15th DEC to Hayley Lewis – 0418 838 872
- ✦ T-Ports will contact registered growers to discuss delivery windows that best align with accumulation plans during JAN and FEB
- ✦ If you have any questions about delivery windows, please contact Operations Manager Jon Nayda – 0417 846 341
- ✦ Growers will receive their rebate from T-Ports during April 2026.



Checklist

Before delivering to a T-Ports site, please read this Handbook to ensure you are up to date with T-Ports procedures. The following checklist provides the basic information to ensure your experience with T-Ports is smooth and problem free.

On Farm

- ☐ Trailers are clean prior to loading both inside and out.
- ☐ Field bins/grain augers are cleaned out prior to first use and before changing commodities to ensure free of contamination

Heavy Vehicle Operations

- ☐ Truck and trailer registrations are current and valid
- ☐ Correct permits and licenses are carried at all times
- ☐ Tailgates are checked for safe operation in line with T-Ports requirements
- ☐ All road access levels and correct mass limit have been identified
- ☐ Where possible systems in place to assist in managing axle and gross mass while loading (i.e. scales)

Pre-Delivery

- ☐ Confirm site hours and available services – visit the T-Ports App or contact your nearest site
- ☐ Ensure a Harvest Delivery Form is completed, and both the farmer and driver have signed off on each load
- ☐ National Grower Registration (NGR) number is registered and ready for delivery
- ☐ Delivery options have been discussed with driver/carrier (overloading/downgrading options)
- ☐ T-Ports induction is current and complete

Delivery

- ☐ Sample office – Check and confirm the load grading
- ☐ Inwards weighbridge – Check and confirm gross weight
- ☐ Receival Grid – Follow the grid attendant instructions for unloading
- ☐ Outwards weighbridge – Check and confirm tare weight
- ☐ FINALLY, check all information on the transaction is true and correct

Storage and Handling

- ☐ T-Ports provides storage for wheat, barley, lentils and other commodities pending trade requirements
- ☐ All T-Ports Fees, Terms and Conditions are available on our website: www.tports.com

Code of Practice

T-Ports uses the Grain Transport Code of Practice as a means of preventing non-compliance and enforcing strict hygiene and WHS management for anyone delivering into a T-Ports site. The code covers the following compliance standards;

- ✚ Health and Safety
- ✚ Hygiene
- ✚ Mass Management
- ✚ Fatigue

Chain of Responsibility (CoR) and Heavy Vehicle National Law (HVNL)

All parties who have involvement in road transport activities have obligations under Heavy Vehicle National Law and Chain of Responsibility to prevent a breach. Every responsible person in the supply chain must take positive steps to prevent mass, load restraint, dimension, fatigue, and speed offence breaches. T-Ports as a part of the chain has processes in place to ensure the safety of all involved. T-Ports will comply with all requests from authorities and/or regulators for information relating to C.O.R.

Should you require more information on your obligations please visit www.nhvr.gov.au

Health and Safety

T-Ports is committed to providing a workplace that enables all work activities to be carried out safely. We will take all reasonably practicable measures to eliminate or minimize risks to the health, safety, and welfare of workers, contractors, visitors, and anyone else who may be affected by our operations.

We are committed to ensuring we comply with the Work Health and Safety Act 2012(the Act). We will also comply with any other relevant legislation, applicable Code of Practice and Australian Standards as far as possible.

The following will outline important site operational and safety information that you will need to know before arriving. We ask for your cooperation and participation in all aspects of safety on site, and we will continue to provide a safe and efficient workplace.

Road Safety

- ✚ Normal road rules apply on all T-Ports sites.
- ✚ Always engage your park brake before exiting the vehicle.
- ✚ Always wear your seatbelt
- ✚ Never use your mobile phone when driving
- ✚ Follow site traffic management plans and instructions from T-Ports staff
- ✚ Ensure you understand the traffic flow on the site you are delivering to and follow it accordingly
- ✚ Be cautious of pedestrian traffic

Pedestrians

Workers are often required to work within close proximity of your vehicle and it is your responsibility to watch for pedestrians. Please be observant at all times when moving your vehicle.

Passengers

Due to the high frequency of heavy vehicles moving throughout site we require all passengers to remain inside the vehicle when safe to do so. Drivers are responsible for the safety of all passengers. Any children or animals are required to remain inside the vehicle at all times.

Alcohol and Drugs – Zero Tolerance

T-Ports is committed to protecting the health and safety of all workers, clients, and members of the public by eliminating accidents, incidents, or injuries arising from the use of drugs or alcohol in the workplace. Alcohol and/or drugs usage becomes a WHS issue if a person's ability to exercise judgement, coordination, motor control, concentration and alertness at the workplace leading to an increased risk of injury or accidents to themselves or others. As a visitor you may be subjected to T-Ports' Drug and Alcohol Testing. Anyone under the influence of drugs or alcohol will be asked to leave the site immediately.

T-Port has a zero-tolerance policy.

Prevention of Dust Explosions

If the conditions are right, grain dust has the potential of igniting and exploding. Dust explosions such as these have caused some of the world's worst industrial accidents. To minimise the risk of dust explosions we ask that you follow these important rules:

No smoking: There is one designated smoking area on each site, if you are unsure where this is, ask a T-Ports representative.

Restricted use of mobile phones: Do not operate your mobile phone when operating or driving your vehicle.

Hazardous Conditions

During strong winds and electrical storms T-Ports workers may not attend to your delivery until the weather conditions improve.

Extra care should be taken during strong winds when operating trailer tarps and when tipping trailers.

When operating at night, ensure you are wearing high visibility clothing.

Fumigation

Chemicals used for the fumigation of grain on a T-Ports sites can be lethal to humans if exposed. Only licensed fumigators are able to fumigate grain. Under no circumstance should you enter an exclusion zone set up around a fumigation area. An exclusion zone may be delineated by tape, flagging or signs. If you are unsure, please speak to a T-Ports representative first.

Personal Protective Equipment

As detailed in your T-Ports induction and site signage all visitors are required at a minimum to have:

- ✚ Hi-Vis Clothing
- ✚ Fully enclosed sturdy boots / shoes (steel cap boots recommended)

Additional PPE may be required pending site signage and/or operating conditions such as:

- ✚ Dust mask (recommended minimum P2 dust mask)
- ✚ Safety glasses and/or goggles
- ✚ Hearing protection
- ✚ Gloves
- ✚ UV protection

Please contribute to safety at our sites by:

- ✦ Reporting to the sample stand or site office on arrival
- ✦ Obeying warning instructions and signs
- ✦ Keeping clear of all machinery and equipment, including mobile plant
- ✦ Never entering any storage facility unless accompanied by a T-Ports worker
- ✦ Never assist a T-Ports worker with their duties or operating T-Ports plant and/or machinery
- ✦ Reporting hazards or incidents and injuries while on site to the T-Ports Site Manager

Your adherence to all safety rules, and instructions from site workers, will help ensure safety on site.

PPE	Description	Requirement	Location
High Visibility Clothing	A green, yellow, or orange vest, shirt and/or jacket. If delivering at night, high visibility clothing with light reflecting strips is preferred. High visibility clothing must be worn so it is visible at all times and done up to prevent from catching.	Mandatory	All Locations
Safety Footwear	Fully enclosed, sturdy work boots, or shoes, worn correctly.	Mandatory	All Locations
Eye Protection	Includes well-fitting safety-rated glasses (tinted or clear), and/or safety rated goggles.	Advised	All Locations
Hearing Projection	Hearing protection including ear plugs or earmuffs should be worn during grain unloading or at any other time you may be exposed to high levels of noise.	Advised	All Locations
Dust mask	A dust mask should be worn in any areas in which you will be exposed to grain dust.	Advised	All Locations
Sun protection	Protection against the sun is proven to decrease the risk of skin cancer. T-Ports advises to wear a long sleeve shirt, and pants, UV eye protection, a full brim hat and sun cream.	Advised	All Locations
Gloves	Work gloves to protect hands when opening and closing tarps and tailgates are advised.	Advised	All Locations



Heavy Vehicle Operators

All heavy vehicle operators delivering grain to T-Ports sites should be aware:

- ✦ Ensure your tailgate chains are fitted and are correctly adjusted to a maximum gap of 80 - 100mm to allow for best efficiency of plant
- ✦ You are responsible for opening and closing all tailgates and/or bagging chutes at the receival grid
T- Ports workers will not operate tailgates
- ✦ Ensure all built up grain is cleared from tailgates, draw bars etc. before moving off to reduce grain spillage
- ✦ Ensure brakes are applied at all times before exiting vehicle to prevent roll aways
- ✦ Ensuring your vehicle and trailers are roadworthy and fit for purpose
- ✦ Follow all site traffic management plans
- ✦ Follow all reasonable instructions by T-Ports workers
- ✦ Watch for overhead obstructions (i.e. powerlines, plant equipment etc.)
- ✦ Remain outside the danger zone when tipping trailers. Always try to work/stand alongside trailers when performing duties, in clear vision of others
- ✦ Control tipping operations to prevent roll-overs, road hopper damage and grain spillage
- ✦ Do not enter exclusion zones
- ✦ Do not climb onto or into your trailers
- ✦ Do not travel with trailers in the raised position, they must be fully lowered before departing the grain receival grid
- ✦ Do not obstruct traffic flow with parked vehicles
- ✦ Speak with T-Ports site management before conducting any vehicle maintenance / repairs
- ✦ Be aware of your mass limits
- ✦ You are responsible for adhering to all C.O.R and HVNL laws, regulations and guidelines

Incident Reporting

In order to improve safety and operations on our sites it is vital that all hazards or incidents that occur on site are reported. The T-Ports incident reporting process is quick and easy and should be carried out as soon as possible. Talk to a T-Ports employee if you need to report a hazard or incident.

Similarly, any first aid supplies used on site must be reported in order for T-Ports to re-stock supplies and ensure trends can be monitored.

Tailgate Policy

Due to the high safety risks associated with the opening and closing of tailgates, and working in close proximity to moving vehicles, T-Ports workers are not permitted to open or close any tailgates. Opening and closing of tailgates is the responsibility of the driver.

Drivers should take caution and stand in a safe position to avoid the potential release of hazardous energy when opening their tailgates. All tailgates must be fitted with appropriately fitted safety chains. T-Ports will refuse the unloading of any vehicle that does not meet this requirement.

Grid Protocols

When approaching the grids to unload your vehicle locate the grid operator to confirm it is safe to proceed. The grid operator is the person in charge of the unloading process and will guide through the tipping process. It is crucial that you follow the grid operator's instructions at all times.

Grid operators are required to work in close proximity to your vehicle. Never move your vehicle unless the grid operator gives you clear instructions to do so and you have confirmed they are located in a safe area.

Ensure you are familiar with hand signals that may be used by grid operators. If you are unsure, seek clarification from grid operator prior to unloading.



It is counter productive to flood the grids with grain as this takes longer to unload your vehicle, simply ease a constant supply of grain onto the grid at the same intake speed as the receival hopper to ensure the best efficiency. 400mm of grain above the grid gets best results and keep grain from touching tyres.

Furthermore, all grid operators will be equipped with UHF radios and can be contacted on the site's UHF channel. Below are the standard UHF channels for each site however during busy times sites may be operating across multiple channels to ensure effective communication. Speak to a site representative if you are unsure what channel to operate on.

Lucky Bay	Lock	Kimba	Wallaroo
Ch. 20	Ch. 20	Ch. 20	Ch. 19

Overloading Policy / Strikes

All harvest deliveries into T-Ports sites will be in line with the **South Australia Heavy Vehicle Farm Gate Grain Transport Mass Exemption Notice 2025 (No.1)**. Heavy vehicle operators delivering to T-Ports during harvest should be aware of this notice and operate within the conditions.

T-Ports as part of this supply chain, have a responsibility to ensure compliance and to this end, T-Ports will collect weight data of all heavy vehicles and where applicable, provide notification to the driver and NGR holder when an overload beyond the allowable configuration mass limit occurs.

All overloads will have a warning printed on the weighnote for the driver. Any overload exceeding the operating parameters of the **South Australia Heavy Vehicle Farm Gate Grain Transport Mass Exemption Notice 2025 (No.1)** an email will be sent to the NGR holder.

Where excessive and persistent overloading occurs or where no attempt has been made to comply with mass limits, T-Ports will take measures which may include, but are not limited to, warnings, site restrictions and reporting to heavy vehicle enforcement authorities.

T-Ports may also be called upon and will comply with requests for load information to the Heavy Vehicle Regulator and/or South Australia Police for enforcement measures. T-Ports' aim is to ensure a culture of compliance within the heavy vehicle industry, specifically grain haulage.

Working with Other Grain Receivers

It is imperative that all registered grain receivers work together to ensure that transport operators and growers are complying with legislation and using best practice to ensure that all deliveries are safe and roadworthy.

Every transport operator and grower must register with each grain receiver separately. This includes completing a T-Ports' Harvest Delivery Form (paper or app) when delivering to our sites. We will only accept T-Ports forms and will not accept other receivers' forms.

T-Ports is also an active member of the Grain Transport Safety Network (GTSN) which includes other bulk handlers around Australia to ensure industry heavy vehicle compliance through mass limit charts, truck books and understanding of industry relevant notices. Should you wish to learn more about GTSN please head to www.gtsn.com.au

Hygiene

All vehicles and trailers presenting to a T-Ports site should be clean, licensed, fit for purpose and in a road-worthy condition. All trailers should be cleaned accordingly based on the last product carried in each trailer.

T-Ports has the right to refuse or reject if a vehicle presents in an unclean condition, not un-roadworthy, not fit for purpose or has previously carried a product deemed not safe for transportation of grain products.

Remember – Grain is food!

Class 1 Products

The following materials **must not** have been carried in vehicles used for the transportation of grain into or out of T-Ports sites.

- ✚ Toxic and corrosive materials (*including asbestos*) and any packaging used for these materials, radioactive materials, animal/poultry wastes (*including manures/litter*) and soil containing animal manure (*peat*)
- ✚ Unprocessed animal matter, wet offal, animal manure or dead stock
- ✚ Mammalian protein, e.g., meat and bone meal, meat meal, cull cake and other mammalian-based products
- ✚ Metal flakes or metal product
- ✚ Glass
- ✚ Sludge from sewage plants treating waste waters (*biosolids*)
- ✚ Solid urban waste, such as household waste
- ✚ Materials contaminated with salmonella or other pathogens
- ✚ Untreated waste from eating places
- ✚ Other materials as determined by T-Ports

Class 2 Products

Cleaning required – All physical and chemical remnants removed (*high pressure water wash with sanitizer and/or steam*).

- ✦ Asphalt (fresh) and asphalt rubble
- ✦ Milk and milk products, gelatine, amino acids, dicalcium phosphate, dried plasma, and any other blood products
- ✦ Tallows
- ✦ Mineral clays which have been used for detoxification purposes
- ✦ Coal and coal products
- ✦ Composts (*including green plant material*)
- ✦ Treated bulk grains (*e.g., pickled grain*)
- ✦ Treated fertilisers (*e.g., intake etc.*)
- ✦ Treated wood products
- ✦ Medicated stock feeds
- ✦ Insect infested grain products
- ✦ Hides treated with tanning substances and associated waste

Class 3 Products

Cleaning required – All physical remnants removed (*blown out, swept, or washed as required*)

- ✦ Untreated bulk grains (*e.g., when changing grain types*)
- ✦ Untreated fertilisers (*e.g., super phosphates etc.*)
- ✦ Inert mineral material (*e.g., road base, sand, lime, gypsum etc.*)
- ✦ Untreated wood chips
- ✦ Salt

Accreditation and Fatigue Management

All heavy vehicle operators must ensure that their accreditations are up to date and they have policies in place to ensure that regulations regarding WHS, fatigue management, mass management and accreditation are in place. It is everyone's responsibility in the entire supply chain to ensure best practice when it comes to road safety.

Trucks claiming Concessional (CML) or Higher Mass Limits (HML) must have the appropriate NHVAS Accreditation and supply T-Ports with the accreditation number. Failure to supply an Accreditation Number will result in the truck/combination being deemed to operate at General Mass Limit (GML) weights only.

Operators of heavy vehicles need to be mindful of their work and rest requirements keeping in line with Heavy Vehicle National Law (HVNL) requirements. The table below outlines work and rest for solo drivers operating under standard hours whilst operating a fatigue related heavy vehicle.

TIME	WORK	REST
In any period of...	A driver must not work for more than a maximum of...	And must have the rest of that period off work with at least a minimum rest break of...
5 ½ hours	5 ¼ hours work time	15 continuous minutes rest time
8 hours	7 ½ hours work time	30 minutes rest time in blocks of 15 continuous minutes
11 hours	10 hours work time	60 minutes rest time in blocks of 15 continuous minutes
24 hours	12 hours work time	7 continuous hours stationary rest time*
7 days	72 hours work time	24 continuous hours stationary rest time
14 days	144 hours work time	2 x night rest breaks [#] and 2 x night rest breaks taken on consecutive day

*Stationary rest time is the time a driver spends out of a heavy vehicle or in an approved sleeper berth of a stationary heavy vehicle. #Night rest breaks are 7 continuous hours stationary rest time taken between the hours of 10pm on a day and 8am on the next day (using the time zone of the base of the driver) or a 24 continuous hours stationary rest break.

Source: <https://www.nhvr.gov.au/safety-accreditation-compliance/fatigue-management/work-and-rest-requirements#standard>

Harvest Delivery Form (HDF)

A Harvest Delivery Form (HDF) is a document that is required for every delivery into any T-Ports site. A load will not be accepted unless a fully completed HDF is provided to the sampling staff.

The information provided on the HDF is important to ensure staff can correctly grade and store each load, therefore it is imperative that the HDF is completed by both the grower and transport operator.

Please note the following important information regarding the completion of each HDF:

- ✚ All information supplied must be clear and legible. Please use block letters and print neatly
- ✚ NGR must be accurate as this information is used to correctly identify each grower and payments are made against each NGR
- ✚ Vehicle registration and mass limit information must be accurate
- ✚ Any changes/mistakes on the HDF must be initialled by the deliverer
- ✚ A grower is also required to complete the section titled “*Declaration Information*” prior to any delivery
- ✚ All HDFs must be completed in pen. Pencil will not be accepted
- ✚ The HDF is a legal document and by completing one you are agreeing to T-Ports’ site delivery terms and conditions

You can get copies of HDFs from all T-Ports sites at the classification center on first load or at the Lucky Bay and Wallaroo port offices. Alternatively online versions of the HDF are available via the T-Ports app.

Form | Harvest Delivery

DATE

TRANSACTION



GROWER INFORMATION		CARRIER INFORMATION	
NGR		Carrier name	
Trading name		Truck registration no	
Contact name		Legal mass limit (tonnes)	
Contact phone		Mass limit code	
Paddock ID		Accreditation/permit no	
Last commodity carried		Cleaning method	

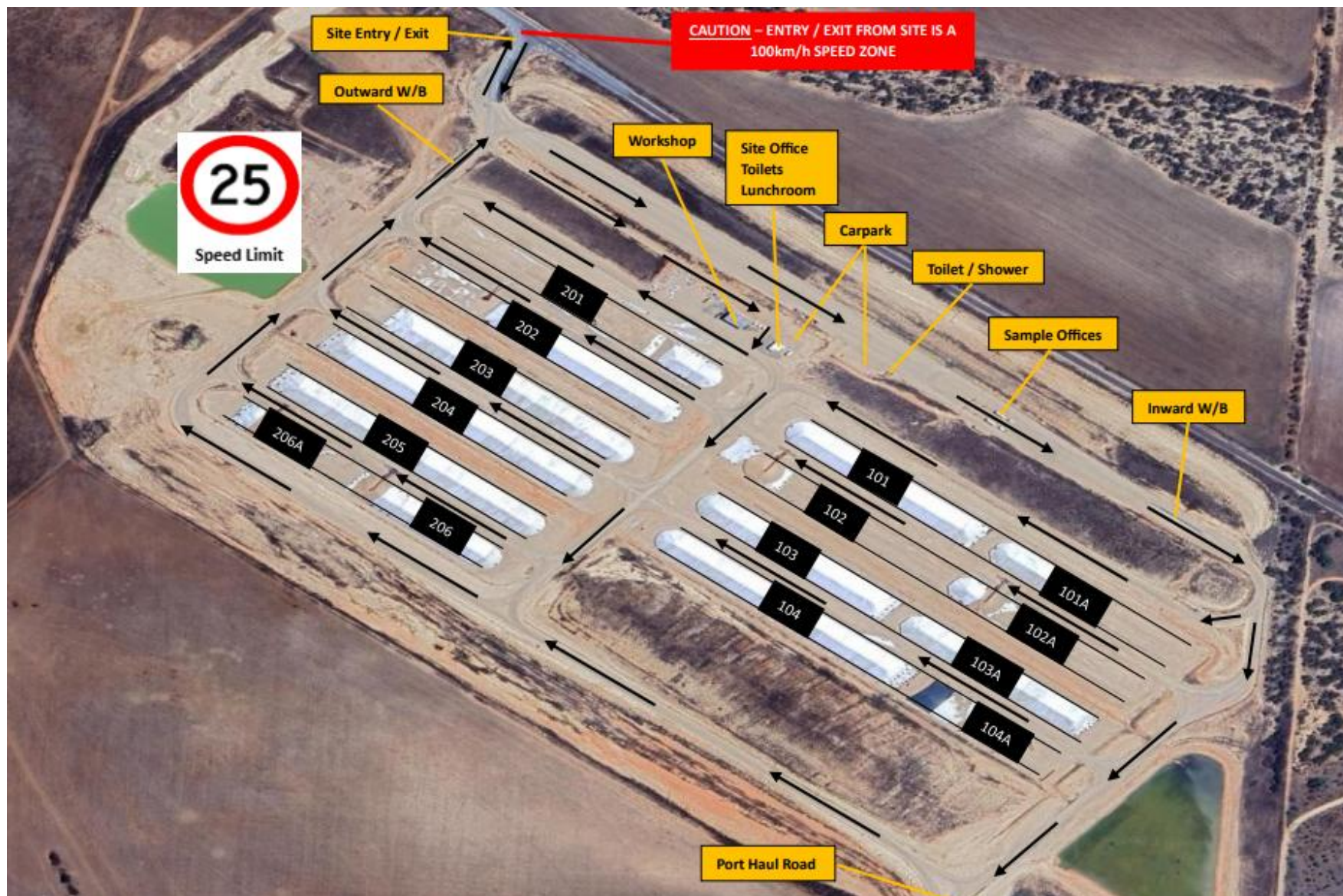
GRAIN INFORMATION	
Season of production	<input type="radio"/> New crop <input type="radio"/> Old crop
Commodity	
Variety	
Expected grade	
Voluntary Downgrade (If applicable)	<input type="radio"/> Yes, exclude the following classification assessment:
Selling option	<input type="radio"/> Warehouse <input type="radio"/> Cash <input type="radio"/> Contract <input type="radio"/> Pool
	Contract no
	Pool code
	Buyer

DECLARATION INFORMATION	
Has any chemical been applied?	<input type="radio"/> Yes <input type="radio"/> No
Has Glyphosate been applied?	<input type="radio"/> Yes <input type="radio"/> No
Have Imidazoline (IMI) herbicides been applied?	<input type="radio"/> Yes <input type="radio"/> No
Has the application of chemicals to this grain during planting and growing or since harvest until this delivery point been in accordance with the registered label instructions and comply with relevant legislation requirements.	<input type="radio"/> Yes <input type="radio"/> No

By signing this document, the grower acknowledges the details provided are true, accurate and in accordance with T-Ports terms and conditions.

NAME	SIGNATURE
------	-----------

Lucky Bay Bunker Site – Traffic Management Plan



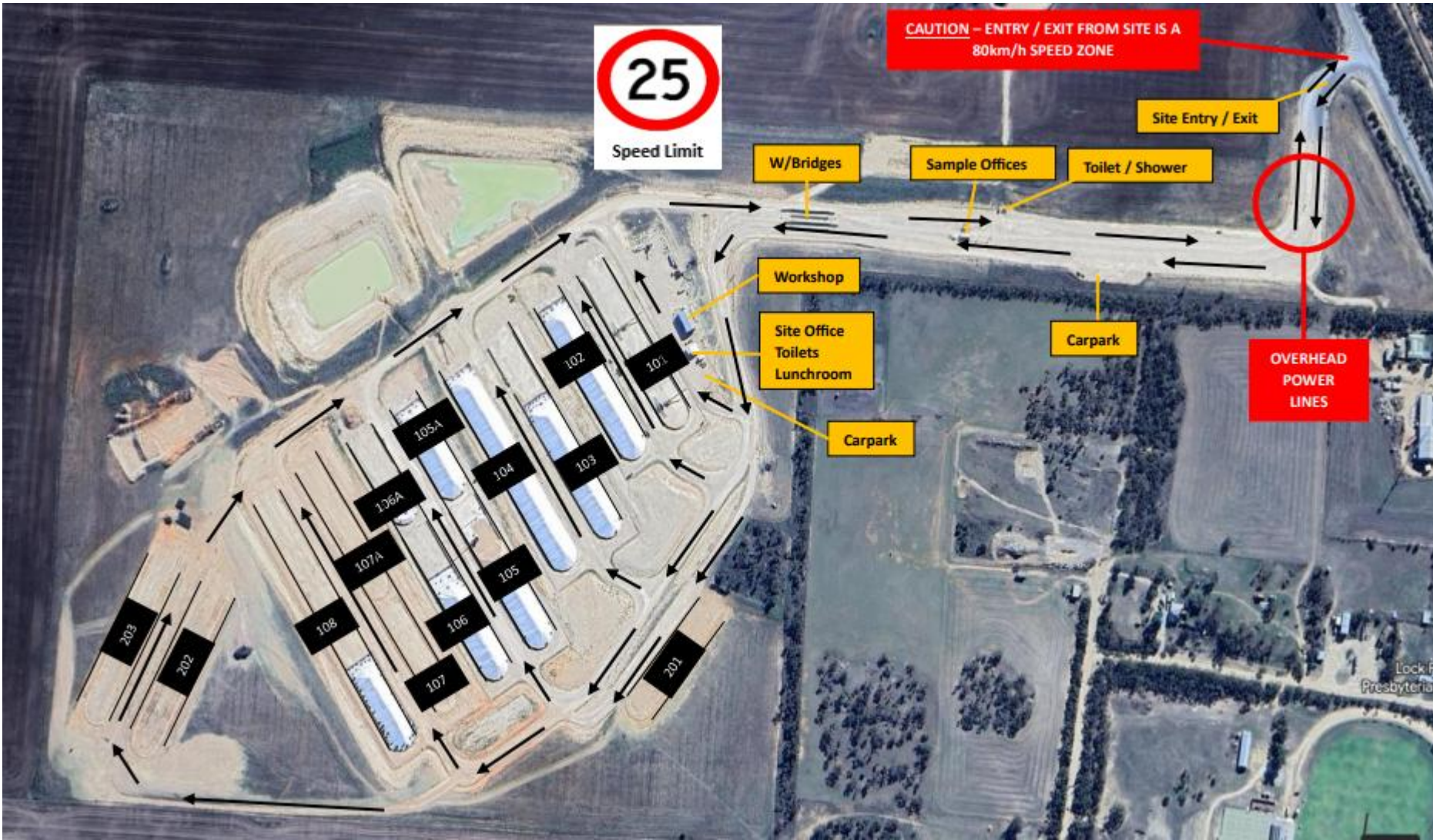
Lucky Bay Port Site – Traffic Management Plan



Lucky Bay Haul Road – Traffic Management Plan



Lock Bunker Site – Traffic Management Plan



Kimba Bunker Site – Traffic Management Plan



Wallaroo Bunker Site – Traffic Management Plan



Wallaroo Port Site – Traffic Management Plan



T-Ports Careers

You might be the one we are looking for!

At T-Ports, our people are our biggest asset and providing them welcoming work environment and pleasant work experience is our objective. We focus on effective communication, positive attitude, and critical thinking.

You can find all our vacant positions advertised on our career portal – <https://tports.com/careers/>.

We always encourage people to check our career portal to apply online if they find any suitable position. Alternatively, they can also send us their updated resume with the position details on employment@tports.com for us to review.

Key Contact Information

Harvest Information

www.tports.com/harvest

Online Web Portal

www.tports.com

Grower Support

1800 87 67 87

Grower Relations Officer

Hayley Lewis
0418 838 872

Operations Supervisor – Lucky Bay / Lock

Barry Creighton
0477 916 663

Operations Supervisor – Kimba

Sean Moylette
0477 294 145

Operations Supervisor - Wallaroo

Roy Price
0458 067 991

Operations Manager

Jon Nayda
0417 846 341

GM Operations

Jeff Cowan
0477 348 774